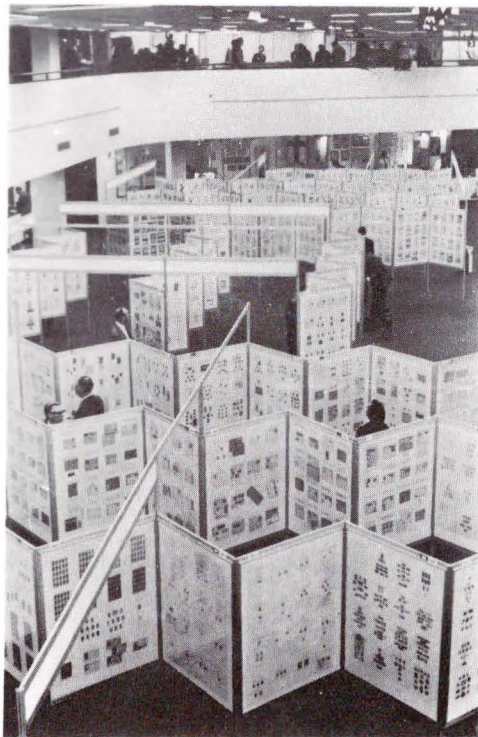


PHILATELIC

REVIEW



50p

GREAT BRITAIN

DEFINITIVE SETS

		U/m	M/m			U/m
QUEEN VICTORIA						
1887-				1939-48	High values (6v.)	£350.00
1900	Jubilee (14v.)	—	£245.00	1941-42	Light colour (6v.)	£3.00
KING EDWARD VII					Ditto, watermark inverted (3v.)	£12.00
1902-10	De La Rue (O) (15v.) ½d. x 2, 4d. x 2	—	£175.00		Ditto, watermark sideways (3v.)	£26.00
1905-10	De La Rue (c) (9v.)	—	£175.00	1950-51	New colours (6v.)	£3.50
1911	Harrison (perf. 14) (5v.)	—	£60.00		Ditto, watermark inverted (5v.)	£12.00
1911	Harrison (perf. 15 x 14) (5v.)	—	£50.00		Ditto, watermark sideways (4v.)	£3.00
1911-13	Somerset House (8v.)	—	£90.00	1951	"Festival" high values (4v.)	£130.00
KING GEORGE V				QUEEN ELIZABETH II		
1911-12	Downey Head series (12v.)	£50.00	£30.00	1952-54	Tudor (17v.)	£80.00
1912-24	Royal Cypher (14v.) 9d. x 1	£125.00	£70.00		Ditto, watermark inverted (5v.)	£24.00
	Ditto, watermark inverted (5v.)	£25.00	£16.00		Ditto, watermark sideways (3v.)	£4.00
1913	Multiple Cypher (2v.)	£450.00	£195.00	1955	Waterlow "Castles" (4v.)	£345.00
1918	Bradbury "Seahorses" (3v.)	—	—	1955-58	Edward (17v.)	£160.00
1924	Block Cypher (12v.)	£135.00	£70.00		Ditto, watermark inverted (7v.)	£15.00
	Ditto, watermark inverted (3v.)	£2.50	£1.75		Ditto, watermark sideways (5v.)	£14.00
	Ditto, watermark sideways (4v.)	—	£95.00	1957	Graphite (6v.)	£11.00
1934	Photogravure, large format (2v.)	95p	60p	1958	1st De La Rue "Castles" (4v.)	£1300.00
	Ditto, watermark inverted (2v.)	£135.00	—	1958-65	Crowns, ordinary (17v.)	£8.50
1934-35	Ditto, intermediate format (4v.)	£13.00	£7.50		Ditto, watermark inverted (7v.)	£50.00
	Ditto, watermark inverted (3v.)	£50.00	£35.00		Ditto, watermark sideways (7v.)	£7.00
1935-36	Ditto, small format (11v.)	£90.00	£45.00	1958-61	Graphite (8v.)	£90.00
	Ditto, watermark inverted (3v.)	£20.00	£13.00		Ditto, watermark inverted (5v.)	£80.00
	Ditto, watermark sideways (4v.)	—	£115.00	1959	2nd De La Rue "Castles" (4v.)	£335.00
1934	Re-engraved "Seahorses" (3v.)	—	—	1959	Phosphor-graphite (8v.)	£90.00
KING EDWARD VIII				1960	Green phosphor (9v.)	£30.00
1936	K. E. VIII (4v.)		U/m	1960-67	Crowns, phosphor (17v.)	£13.50
	Ditto, watermark inverted (3v.)		50p		Ditto, watermark inverted (10v.)	£150.00
			£10.00		Ditto, watermark sideways (8v.)	£24.00
KING GEORGE VI				1963-68	1st Bradbury-Wilkinson "Castles" (5v.)	
1937-47	Dark colours (15v.)		£40.00		2/6 x 2	£30.00
	Ditto, watermark inverted (5v.)		£135.00	1967	Machin gum Arabic (9v.)	£3.00
	Ditto, watermark sideways (5v.)		£85.00	1967-70	Ditto, P.V.A. (16v.) 4d. x 2, 8d. x 2	£5.00
				1967-68	Bradbury-Wilkinson no watermark	
					"Castles" (4v.)	£22.00
				1969	Machin high values (4v.)	£25.00

CANDLISH McCLEERY LTD.

40 WHITELADIES ROAD, BRISTOL BS8 2LG — Telephone 0272 35038

the PHILATELIC REVIEW

Volume 4 No. 1

Edited by Mike Jackson

January 1980

CONTENTS

EDITORIAL

REFLECTIONS ON PANES — 7

Sam Lawrence

A TRAFALGAR SQUARE LION

John Forbes-Nixon

A GOLDRUSH HALFPENNY OVERPAID!

John Forbes-Nixon

BRITISH EXPLORERS

Mike Jackson

GEORGE V NOTES

EDITORIAL

1 The British Philatelic Exhibition, held last November, was a delight for the visitor, for the exhibitor, for the trade and no doubt for the organisers. Held for the first time at the Wembley Conference Centre, the change of venue made all the difference. The exhibition was well laid out, well lit and had well-appointed amenities.

2
3
4 As can be seen from the photographs on the following pages, the frames provided an excellent temporary home for the competitive exhibits. These frames are to be used at London 1980 in May, and were having an airing prior to the international. Not only the frames, but also the dealers' stands were 'borrowed' from London 1980, thus both sides of the fence were afforded a small preview.

M.J.

10

Cover — A view of the B.P.E. at Wembley

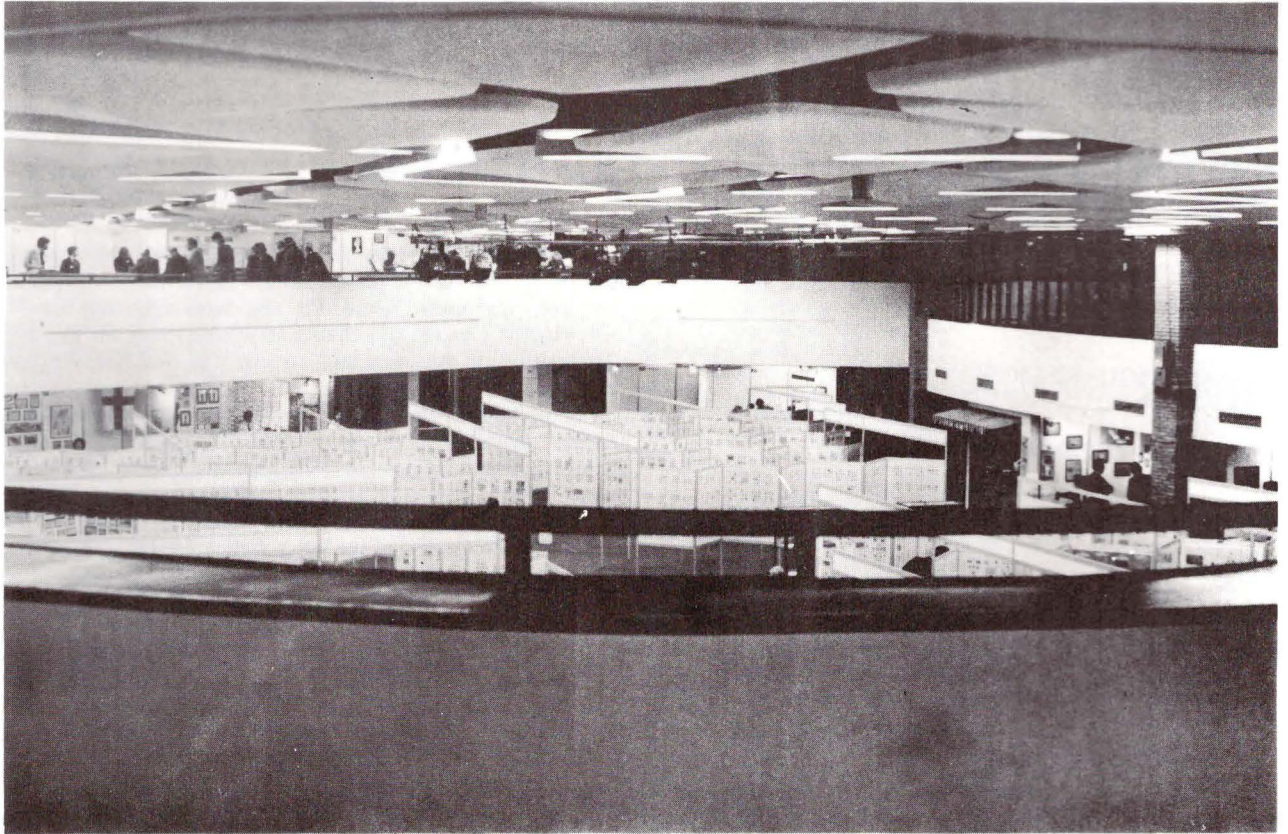
Published quarterly by Candlish McCleery Ltd. Price 50p.

International Standard Serial Number 0309-9350.

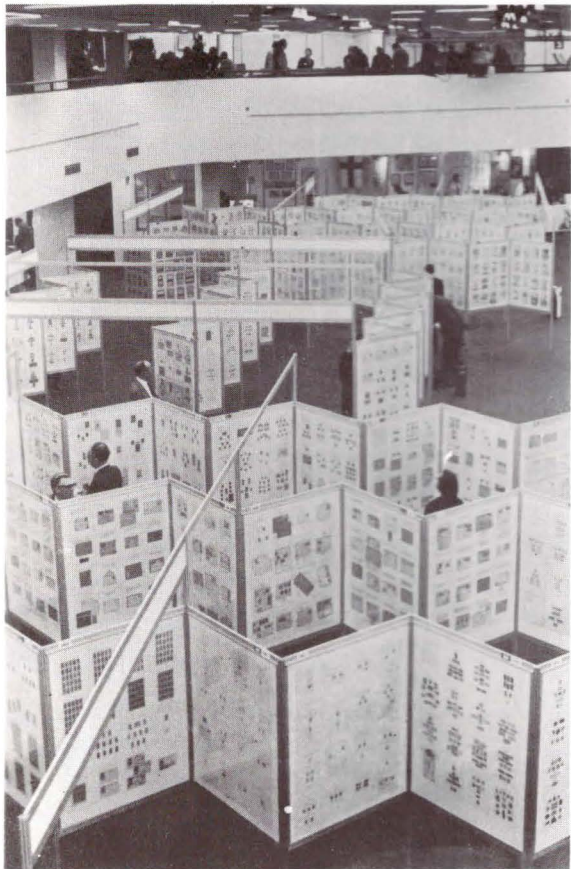
Annual subscription (four issues): Inland £2.00; Overseas (sea) £3.00, (airmail) £4.00.

Editorial Correspondence: 23 Craven Street, Melton Mowbray, Leics. LE13 0QT.

Advertisement enquiries: 40 Whiteladies Road, Bristol BS8 2LG (telephone 0272 35038).



B.P.E. 1979 — Looking over the balcony. Most of the dealers' stands were on this upper level.



B.P.E. 1979 — A view of the frames.



B.P.E. 1979 — A view of a stand.

REFLECTIONS ON PANES - 7

Sam Lawrence

I have been taking a closer look at a 3/- booklet, first issued in February 1924 and printed by Waterlow and Sons. It is probably an advertiser's voucher copy as each stamp is overprinted CANCELLED, and it carries a stamped date, 10th December 1931, on the front cover. The panes have the normal Block Cypher watermark upright and come from the centre of the booklet sheet.

It appears that there must have been a rubber stamp which struck all six CANCELLED overprints in one strike. The distances between the first and second and the second and third overprints are 7.5mm and 9mm respectively. There is a slight bowing of the strike .5mm upwards from the centre. There are also marks and the bleeding of the black ink to suggest the following; the rubber stamp probably measured 60mm × 34mm. The 60mm dimension is the precise measurement of the printed stamps from the western edge of the stamps of column 1 to the eastern edge of column 3. The 34mm allows the cancellation stamp, if struck accurately enough, to place the strike dead centre of the monarch's face, on a line running through the ear and nose.



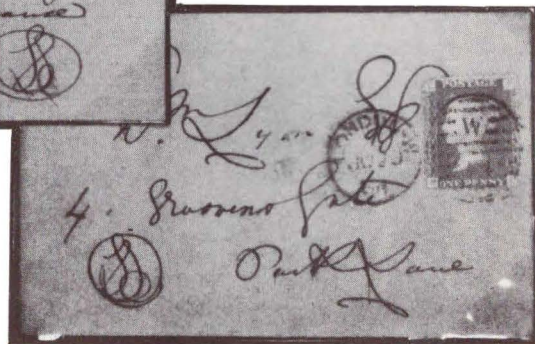
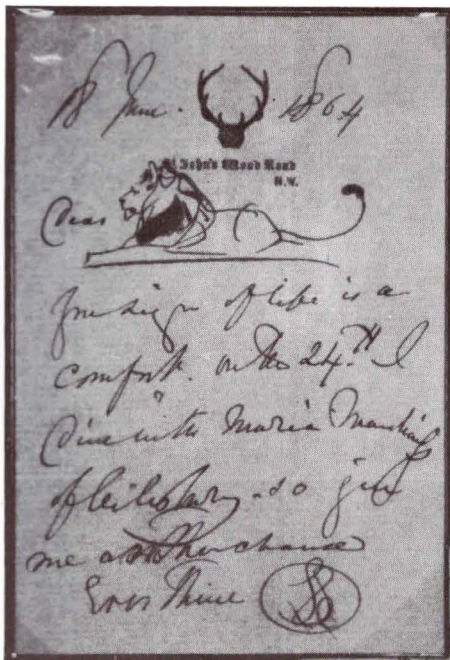
There appears to have been more than one rubber stamp used, as other panes carrying the same cancellations do not correspond in the distances between the individual overprints, but they do correspond in the overall size. The overprint is SG Type 33. This is listed as being in three types, which probably refers to the individual cancel and not the 'block'.

There has recently come into my possession one or two Block Cypher GV panes with the usual 'cancellation' strike, but the imprint is so heavy that the back of the pane shows the overprint quite clearly — in reverse of course! I have too few panes to draw any general conclusion, but it appears that not only were rubber stamps used but somewhere along the line a metal stamp was brought into use. Where and when I have no idea, and any information along these lines would be appreciated.

A TRAFALGAR SQUARE LION

John Forbes-Nixon

An envelope dated 18th June 1864 addressed to Wm. Lyon Esq. with the original letter from Sir Edwin Landseer (1802-1873) of Trafalgar Square fame. The letter begins "Dear" followed by a sketch of a lion! Sir Edwin could have gone even further and preceded the lion with a sketch of a deer, which he would have been equally at home drawing. (In fact, he almost accidentally does just that by having antlers as a letterheading!).



WANTED

ARTICLES, CONTRIBUTIONS, OPINIONS
AND OBSERVATIONS.
ON ANYTHING TO DO WITH
GREAT BRITAIN PHILATELY.

A GOLDRUSH HALFPENNY OVERPAID !

John Forbes-Nixon

A vast range of various postal rates existed prior to the U.P.U., shared by the countries over which the mail was carried. Before 1851 a half-ounce letter to California cost 2/4d which was reduced to 1/2½d. This reduction was arrived at by routing via the United States and literal conversion of cents to sterling.

Increased mail to and from California was mainly due to traders associated with the Gold Rush. Figure 1 illustrates part of a later Notice concerning the routing of mail for the 1/2½d rate.

Of course, no ½d stamp existed at this time and was not to be available until 1870. Figure 2 shows a letter addressed to Upper California from Dublin in 1858 with adhesives to the value of 1/3d, overpaid by ½d to avoid surcharge or being returned.



Fig. 2.

Letters, &c., for California, Oregon, and the Sandwich Islands.

Sent out June 10th 1856

INFORMATION having been received that Letters and Newspapers from this Country addressed to California, Oregon, and the Sandwich Islands, reach their destination more expeditiously via New York and Panama, than when forwarded from Southampton by the West India Mail Packets, the regulation which has heretofore existed of transmitting this correspondence by the latter Packets, unless specially addressed to be otherwise sent, is rescinded, and in future, all Letters and Newspapers for California, Oregon, and the Sandwich Islands, will be forwarded, *as a rule, via the United States*, and only those Letters, &c., will be sent by the West India Packets which bear a special direction that they are to be so forwarded.

When transmitted through the United States, the combined British and United States' Postage to the above places will be:—

FOR LETTERS			NEWSPAPERS
Not exceeding $\frac{1}{2}$ an oz.	Exceeding $\frac{1}{2}$ an oz. and not exceeding 1 oz.	Exceeding 1 oz. and not exceeding 2 ozs.	
1s. 2$\frac{1}{2}$d.	2s. 5d.	4s. 10d.	2d. each

Fig. 1.

BRITISH EXPLORERS

Mike Jackson

As a continuation of the article published in Volume 3 on page 37, which dealt with the British Polar Explorers set, executed by the designer, Marjorie Saynor. It is obvious that the two sets of stamps, the first issued in February 1972, and the second in April 1973, were designed together as a series using the same theme; a shoulder-length portrait with a background consisting of a relevant map.

Figure 1 shows roughs and tracings of three explorers connected with Africa; Livingstone, Stanley and Mungo Park. Figures 2 and 3 show stamp-sized miniature paintings of Livingstone and Stanley, which can be compared to the issued stamps illustrated as figs. 4 and 5.



Fig. 1 — Roughs and tracings.



Figs. 4 and 5 — The issued Livingstone and Stanley stamps.



Fig. 2 — Stamp-sized miniatures of Livingstone and Stanley.



Fig. 3 — Miniature of Stanley.

The exploration of America, both North and South, is represented in figure 6 by roughs of Drake, Raleigh and McKenzie. Drake and Raleigh were selected for the actual stamps, and these are shown in figures 7 and 8.

Charles Sturt and Matthew Flinders were suggested to represent the exploration of Australia and roughs of these are illustrated in figure 9. The issued Sturt stamp is shown in figure 10, and completes the set of five.

Figure 11 illustrates a sketch of Captain Cook which was included in the research undertaken by Ms. Saynor. The set of stamps, neatly laid out on an album page, belies the amount of exploratory work done by the designer, and indeed, the final statement, the issued stamps, are only the tip of the iceberg.



Figs. 7 and 8 — The issued Drake and Raleigh stamps.



Fig. 6 — Roughs of Drake, Raleigh and McKenzie.



Fig. 10 — The issued Sturt stamp.



Fig. 9 — Roughs of Sturt and Flinders.



Fig. 11 — Captain Cook.

GEORGE V NOTES

½d Die 1B — Watermark inverted

The illustrated control strip (supplied by our publishers) is of ½d Die 1B from plate 5a, and has an inverted watermark. Characteristically, the tops of the watermark crowns appear in the margin below the stamp images. The reason for this is not clear, but it has been observed on Edwardian examples. Possibly there was a larger margin at the bottom than at the top, between the watermarks and the edge of the paper — if this were then inverted, the narrower margin now at the bottom would produce the observed variety. Because the crown watermark is easily read inverted watermarks are rare. The stamps listed in the catalogues are from booklets, and in view of this perhaps the inverted watermark variety from sheets should be listed separately.

½d Die 1A — Perforated 14

The illustrated postcard has been shown to me by our publishers. It bears a copy of the ½d Die 1A perforated 14, and is postmarked 4th August 1912. All previously recorded copies of this stamp have been used in 1911, so if the date on the postmark can be believed, this is a rather unusual item, and is an addition to the examples recorded in the Philatelic Review, vol. 2, p. 51 and vol. 3, p. 6.

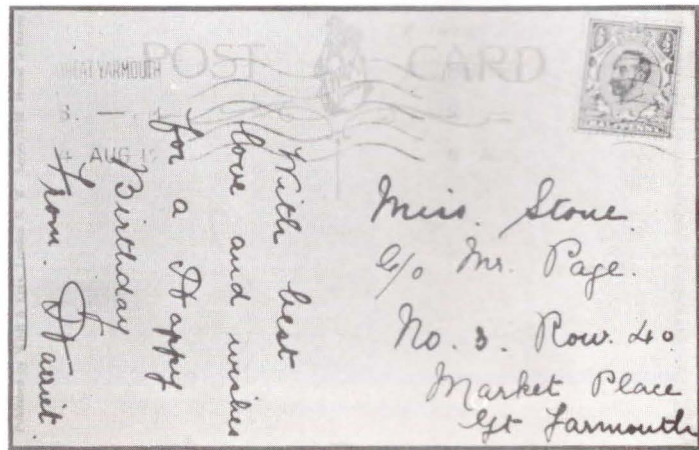


½d Die 1B — Booklet plate marking

This booklet pane of six, ½d Die 1B watermark Crown inverted, has been kindly shown to me by Mr. W. P. Bird. Assuming the paper was properly fed, and that the plate had a top and bottom recognisable to the printers at least, the plate marking is; cut 19th right side, 8mm. It is a constant source of annoyance that there is no way of knowing whether a booklet pane of this period has an inverted watermark, in the sense that the paper was inverted in the press. One clue may be the sort of vertical displacement of the watermark mentioned above in connection with sheet printings. Another is the discovery of plate flaws with both watermarks, as found on a P.U.C. pane (see the Philatelic Review, vol. 2, p. 33 and p. 38).

1d Die 1B — Broken frame

A reader has kindly submitted this 1d Die 1B with a break over EN of PENNY. The other flaws, over O of ONE and on the lion's back, are printing flaws, rather than plate flaws, and are thus of little importance.





1911 1d Die 1A perforation Type 1 (bottom feed)

Illustrated is a control strip of three from the Somerset House printing from plate 1a, showing the Type 1 perforation. This has not been recorded on the 1d Die 1A with control A.11, and is an addition to the list published in the GB Journal, vol. 17, page 14.



6d Royal Cypher — 'Repeating control'

This control strip of the 6d Royal Cypher issue shows a weak impression of the E. of the control E.14 below the third stamp. This phenomenon is also known on certain Edwardian issues (see the Specialised catalogue, 4th edition, p. 40 re this on the 1d value), the Downey Head 1d Die 2 and the 1d Royal Cypher. Its cause is the picking up of the wet ink on the control by the combhead of the perforating machine, which then prints this impression in the margin below successive stamps, each impression being fainter than the last.





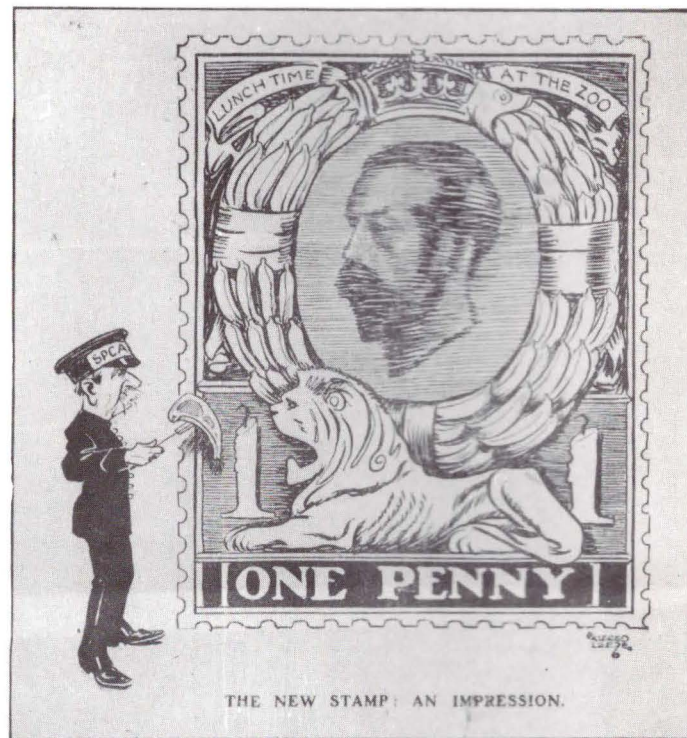
½d Block Cypher — Doubly printed

Illustrated on the previous page is part of a block of six from the top of the sheet, showing portions of a double print. This piece comes from the only sheet known. It was caused by the intrusion of an obliquely placed sheet of paper during the printing, a further wedge-shaped portion of double printing being found at the bottom left corner of the sheet. The illustration shows the point of a wedge of double printing which really only affects the first stamp in the top row, and also the plate dot above the fourth stamp, which helps identify this as plate 32. The control was U 34, and according to the specialised catalogue, this plate was only at press during the Waterlow provisional printing. Only examination of the control block would confirm this.

The sheet was originally reported in the *British Philatelist*, vol. 27, p. 27, June 1934, and was then presumably in the possession of Charles Nissen. Illustrated with the report was a block showing the 16th, 17th, 18th and 19th rows. The top left corner block of six (the companion to the piece overleaf) is illustrated in *British Postage Stamp Varieties Illustrated* on p. 77, together with a pair from the 14th row (without margin). A pair from the 12th row is illustrated in *A Study of the Provisional Issues of 1934 and 1935* by Stanton and Rushworth on page 19.

A Caricature of the 1d Downey Head

The first Georgian stamps came under widespread criticism from all sides, due mainly to the quality of printing rather than the actual designs. As can be seen from this contemporary caricature, the sentiments of the time were that the lion looked thin and hungry, while the King appeared to be drifting through a London fog!



THE NEW STAMP: AN IMPRESSION.

GREAT BRITAIN

FINE STAMPS

1840 1d Black plate 10 lettered OG. A very fine used four margin example with a good crisp strike of the black M.C. S.G. 2. **£155.00**

1841 1d Red printed from black plate 1b, lettered RJ. A superb used four margin example. S.G. 7. **£120.00**

1841 1d Red-brown from black plate 2, lettered DK. A fine mint four margin example with much original gum. S.G. 7. **£850.00**

1840 2d Blue plate 1 lettered CC. A fine used four margin copy with black M.C. S.G. 5. **£165.00**

1841 1d Red-brown, lettered JL. A very fine mint example with good margins and much original gum. S.G. 8. **£110.00**

1841 1d Red-brown on very blue paper, lettered BE. A lightly mounted mint original gum copy with good even margins. S.G. 8a. **£95.00**

1858-79 1d Rose-red plate 212 lettered BI-CK. A superb unmounted mint block of six, well centred with good perfs. S.G. 43. **£75.00**

1870 1½d Rose-red plate 1 lettered KB. A very fine mint example with good colour and perfs. S.G. 51. **£155.00**

1856 6d Pale lilac, watermark emblems. A very fine mint example, well centred with good perfs. S.G. 70. **£285.00**

1879 2½d Rosy mauve plate 14 lettered FF. A very fine mint original gum example. S.G. 141. **£140.00**

1879 3d Pale rose watermark spray, plate 20 lettered AL. A very fine mint original gum example. S.G. 144. **£145.00**

1881 2½d Blue, plate 23 lettered BB. An unmounted mint example in an exceptionally bright tone. S.G. 157. **£135.00**

1881 3d Rose plate 21 lettered TB. A very fine mint single, well centred with good perfs. S.G. 158. **£115.00**

1883-84 10/- Ultramarine, lettered KF. A lightly mounted mint example of good colour. S.G. 183. **£1275.00**

1884 2d Purple on yellow colour trial. A very fine mint well centred example without watermark and perf. 14. S.G. 189. **£165.00**

1883 9d Dull green, lettered HA. A fine mint original gum copy of good colour. S.G. 195. **£225.00**

1904 De La Rue ½d Yellowish green with St Andrew's cross attached. A superb unmounted mint booklet pane of six with inverted watermark and full perfs. all round. S.G. 218a. **£155.00**

1902 De La Rue 1d Scarlet, watermark inverted. An unmounted mint booklet pane of six with perfect perfs. S.G. Spec. MB45a. **£10.00**

1904 De La Rue booklet cover essay. A design similar to the issued booklet in black on racing green. **£125.00**

1912 Downey Head ½d Green, die 1b, simple cypher watermark. An unmounted mint booklet pane of six stamps each overprinted "SPECIMEN" type 22. Good perfs. Rare. S.G. Spec. NB2s. **£650.00**

1912 Downey Head ½d Yellow-green die 2, crown watermark. An unmounted mint copy with the variety "no crown on crown". S.G. 340a. **£50.00**

1912 Downey Head 1d Scarlet, die 1b, simple cypher watermark. A superb unmounted mint booklet pane of six with good perfs. all round. S.G. Spec. NB5. **£50.00**

1912 Downey Head 1d Scarlet die 1b, simple cypher watermark. An unmounted mint booklet pane of six stamps each overprinted "SPECIMEN" type 22. Perfect perfs. Rare. S.G. Spec. NB5s. **£495.00**

1912-24 Royal Cypher 10/- Red banknote. A fine example of this rare emergency printing. **£195.00**

1912-24 Royal Cypher 1½d Red-brown. A lightly mounted mint booklet pane of four stamps and two printed labels. Booklet pane No. 1 complete and with full perfs. S.G. 362b. **£145.00**

1912-24 Miller and Motley Trial for the 4d value in blue on crown watermark paper. A fine mint imperf. single. S.G. fig. 27b. S.G. 379. **£245.00**

1914-24 Postage Due 2d Scarlet colour trial. A lightly mounted mint example. S.G. D3. **£25.00**

1924 Block Cypher 1d Scarlet overprinted "CANCELLED" type 28. An unmounted mint booklet pane of six with perfect perfs. all round. S.G. Spec. NB13u. **£85.00**

1924 Block Cypher 2d Orange, no watermark. A superb unmounted mint example. S.G. 421a. **£265.00**

1929 P.U.C. ¼d-1½d watermark sideways. An unmounted mint set of three, all with full perfs. S.G. 434a-436a. **£285.00**

1929 P.U.C. ½d Green watermark inverted. An unmounted mint example with good perfs. S.G. Spec. N Com 5a. **£15.00**

1929 P.U.C. 1d Scarlet watermark inverted. An unmounted mint example with good perfs. S.G. Spec. N Com 6a. **£17.00**

1934 Photogravure 1d Scarlet, printed on the gummed side. A very fine lightly mounted mint example showing the reversed watermark. S.G. 440b. **£545.00**

1942 Dark colours 2/6 Green booklet No. 92. A very fine complete booklet. S.G. Spec. B55. **£38.50**

1941-42 Light colours. Unmounted mint marginal blocks of four of the set of six values. S.G. 485-490. **£12.00**

1950-51 New colours. Unmounted mint marginal blocks of four of the set of six values. S.G. 503-508. **£12.00**

1955 St Edwards crown 2d Red brown, watermark inverted. An unmounted mint booklet pane of six with good perfs. all round. S.G. 543 INV. **£45.00**

1961 2/- "Dummy" stamp book, lemon cover. Containing four imperforate and gummed panes with Harrison and Sons watermark with plain interleaving between. S.G. Spec. N3. **£20.00**

1971 June 25p Dull purple booklets. An uncut tete-beche pair of booklet proofs with interleaving but no stamps. S.G. Spec. DH46. **£7.50**

CANDLISH McCLEERY LTD.

Printed in Scotland by Woods of Perth (Printers) Ltd., 3-5 Mill Street, Perth

WANTED

BRITISH COMMONWEALTH and GREAT BRITAIN STAMPS

Mint or Used

We must buy, and cash is readily available, should you wish to dispose of the following:—

ISSUED STAMPS (on or off cover), PROOFS, ESSAYS,
SPECIMEN AND CANCELLED OVERPRINTS,
POSTMASTERS' AND POST OFFICE NOTICES,
OLD POSTAL PAMPHLETS, BOOKLETS, COILS, ETC.

We also purchase collections, etc., general or specialised, of Great Britain and British Commonwealth

Please send details in the first place and, if suitable, arrangements can be made for one of our buyers to evaluate your collection. Alternatively, stamps can be sent by registered post and an offer made by return.

CANDLISH McCLEERY LTD.

40 WHITELADIES ROAD, BRISTOL BS8 2LG

Telephone 0272 35038